

Blueprints from 1968 for the original Woman's Hospital.

## Table of Contents

- 2 Letter from the President/CEO
- 4 40 Extraordinary Years
  - Four Decades of Care: A Look Back
- 12 New Campus Development
- 15 In Memoriam—Founders
- 16 Highlights of 2008
- 20 Woman's Hospital Development Report
- 30 Financial Performance
- 34 Woman's Hospital Leadership
- 36 Woman's Hospital Auxiliary
- 37 Woman's Center for Newborn and Infant Care Parent Advisory Council
- 38 Woman's Hospital Volunteers



### Mission

To improve the health of women and infants

### Vision

Together we are building a patient-centered community of extraordinary people and exceptional care

### Values

#### Excellence

Continually improving everything we do

#### Commitment

Showing pride in, loyalty to, and ownership of the mission of Woman's Hospital

#### Innovation

Securing our future through creating new dimensions of performance

#### Mutual Respect

Doing unto others as you would have them do unto you

#### Stewardship

Carefully and responsibly managing the resources of Woman's Hospital

#### Sound Judgment

Making timely decisions based on the information available

Forty extraordinary years.

It's hard to believe that much time has passed since Woman's Hospital welcomed its first patients. The year was 1968, and healthcare institutions dedicated to the needs of women and infants were a new concept. Woman's had been the longtime vision of a group of local physicians who believed such a setting would provide women and infants exemplary healthcare services.

They were right. Over the course of 40 years, as medicine, research and technology have evolved, we have consistently found new ways to meet or exceed the needs of our patients and their families. Today, Woman's is one of the country's largest specialty hospitals, offering a full spectrum of healthcare services to women throughout life, and to infants whether healthy or with serious health conditions.

What has always made Woman's Hospital special is people. Success would never have been possible without the support of the community. Nor would it have happened without the diligence of countless physicians, nurses, employees, donors, and volunteers. Every day, they make sure that early cancer detection is widely available, that women facing surgery have the benefit of top-quality equipment, that high-risk infants receive care of unquestionable quality, and that the day a child is born is the richest one in a family's life.

To each member of the Woman's family, thank you for 40 extraordinary years and for your continuing support.



*Teri*  
Teri G. Fontenot,  
Woman's Hospital  
President and CEO

The hospital founders, past chiefs of staff, volunteers, retirees, staff, and physicians celebrated the hospital's 40th birthday the full week of November 18th.



*Virginia Shiroda and Beth Manning recalling a memory from a photograph from the past.*



*Marguerite and Annelise Scardina, visiting with Karl Pizzolato, MD, 1980 Chief of OB/Gyn. Marguerite was the first baby born at Woman's Hospital, November 18, 1968.*



*Friends and NICU co-workers reuniting at the 40th Birthday reception. Seated, Maebell Nelson, Retired PCT; standing left to right, Dewanna Statham, RN, Elise Collins, Karla Locke, RN, and Melanie Perkins, RN.*

*Founder, Leo Abraham, MD, reuniting with old friends during the reception that kicked off the week's activities.*



*"I started working at Woman's on my 19th birthday. I thought that was a great birthday gift. I didn't realize that gift would last for more than 28 years and I still feel the same way today!" Linda Kennedy, Discharge Analyst in Health Information Management, pointing at a photograph of herself from Woman's past.*



*William C. Haile, MD, one of the hospital's founders, and Robert diBenedetto, MD, visiting with Sylvia Steiner, who has volunteered at Woman's from 1973 to present day.*



*Louise McLaughlin, hospital librarian, holding Surgical Pathology of Gynecologic Disease written by Cary Dougherty, MD, in 1968.*



*Jodi Conachen photographing Christie McDonald, Lee Girlinghouse, and Tracy Eaglin to include in the 40th Birthday time capsule.*



*Jamie Haeuser, Senior Vice President of Operations, looking at photographs from the past.*

## Forty Extraordinary Years

On November 18, 1968, Woman's Hospital opened in Baton Rouge, the dream of 21 local physicians who believed in the idea of a hospital designed specifically for women and infants. It was a landmark notion – few such institutions existed – and it had been planned for more than 12 years. Woman's Hospital's founders believed the new facility would inspire cooperation, spark innovation, and raise the bar on gynecological and obstetrical healthcare. They felt so strongly about the prospect that some used their own credit to back the \$64,000 loan to purchase land at the intersection of Airline Highway and Goodwood Boulevard.

It was a wise decision. For the next four decades, Woman's Hospital thrived and grew. The community's confidence in the respected facility afforded it many opportunities to expand and innovate, and by the end of 2004, every square inch of it had been rebuilt or remodeled at least once. In 2008, Woman's broke ground on a new campus that will help meet current needs while allowing for future growth.

Woman's longest serving administrator, Thomas Hightower, commented that the hospital was built on a foundation of listening. Hightower was sometimes criticized by business colleagues for his people-centric management style, but felt instinctively that sharing decision-making would promote harmony and productivity.

"The secret is the people," he remarked recently. "It always has been."

CEO Teri G. Fontenot agreed. "Forty years later, it's still people – donors, volunteers, physicians, employees, and patients – who make Woman's Hospital the magical place it is," she said.

## Four Decades of Care: A Look Back

### 1968–1978

Thomas Hightower led Woman's between 1969 and 1989, and saw incredible changes in healthcare over his tenure. When Woman's first opened, the use of medical technology was just beginning to evolve. Childbirth was a heavily medicated, isolated experience with little participation from expectant mothers. Fathers were allowed nowhere near the delivery room.

But times were changing, and Woman's responded. The medical establishment began seeing the value of a mother's involvement in her own pregnancy and in the care of her unborn infant. In 1974, the hospital began offering its first prenatal

classes. And two years later in 1976, a new policy allowed a newborn to remain in the mother's room during the day.

Perceptions about the role of fathers also shifted dramatically. Beginning in March 1976, while other visitors still were not allowed in a mother's room at Woman's, fathers could visit at all times. In May of the same year, dads were allowed to visit newborn babies during feeding hours. And by 1978, husbands were allowed to join their wives during vaginal deliveries. Within a month, 46 fathers had witnessed their babies' births – and none had fainted!

*Thomas Hightower.*



*Tracy Lee, RN, and Lisa Sanders, RN, giving newborn Ava Marie Kidder a 40th birthday cap. Ava was born on Woman's 40th birthday to Taylor and Amanda Kidder.*



*Fifty years ago, convinced that a newly developed test called the pap smear would be a valuable aid in detecting cervical cancer, Cary Dougherty, MD, established a laboratory for cervical cancer screening. He donated the funds generated by the test to the newly formed Woman's Hospital Foundation.*

*Harry Wilson played an integral role in the development of ancillary services at Woman's Hospital during his 27 years of service, from 1975-2002. He was here the day the hospital opened in 1968, serving in a volunteer capacity at that time. Harry is remembered with admiration and deep respect from those who worked alongside him.*



*Fathers in the delivery room.*



### 1978–1988

By the beginning of its second decade, Woman's had grown substantially. It was time to expand. In 1981, a new labor and delivery unit opened and was one of the largest and most modern in the nation. Two years later the hospital added 90 new patient beds, bringing the total to 225.

Woman's also added new services. In 1984, the hospital began offering a perinatology clinic for high-risk pregnancies, which later grew to become Maternal-Fetal Medicine. The hospital unveiled the Breast Center in 1985. In its first year, the center performed more than 3,000 mammograms, championing the cause of early detection and breast cancer awareness.

In the mid-80s, Woman's broadened its community education programs by adding classes tailored to new constituents like siblings and grandparents. The Woman's Hospital Child Development Center opened in 1985, offering day care to a growing number of working parents. A percentage of the center's admission was reserved for Woman's employees.

Perceptions about the birth experience in the U.S. continued to evolve. Parents wanted more participation, so in 1983, Woman's featured new

opportunities for same-room labor, delivery, and postpartum care. By 1986, the hospital completed a Family Birthing Center wing, which featured "suites" designed to accommodate comprehensive services.

By its 20th anniversary, Woman's had solidified its reputation as an exemplary childbirth facility, but the hospital was also adding new services for women beyond obstetrics. In 1986, Woman's launched gynecologic oncology services, and a year later, the Osteoporosis Center opened.

### 1988–1998

After leading Woman's Hospital through two decades of success amid dramatically changing times, Thomas Hightower retired in 1989. Assistant Administrator and CFO Vicki Romero was named President and Chief Executive Officer in August 1990.

In 1991 the Urodynamics Center opened, providing services to treat disorders of the lower urinary tract.

By then, admissions had grown so much that in January 1992, Woman's was the second largest women's specialty hospital in the country.

*Woman's Hospital Breast Center.*



*Osteoporosis Center.*



*In the family birth suite, for the first time, women were able to labor, deliver, and recover in the same room, and to experience the birth with their families.*



*Sue Tweedy with M. Giles Fort, MD, in his office.*



In 2006, Sue Tweedy was diagnosed with fallopian tube cancer. Since then, the upbeat former counselor to LSU freshmen has worked with her physician, Dr. Giles Fort, to select treatment options for this rare gynecological cancer. Undergoing surgery and several rounds of chemotherapy, Tweedy has battled successfully to keep the cancer at bay. But throughout the ups and downs, she says she has felt strong, healthy and determined.

That's due in part to Tweedy's spunk, but she likes to credit the team who delivered her chemotherapy. The idea of enduring dozens of chemo sessions, some lasting five hours, could break the spirit of most, but Tweedy says she has been fortified by the concern of the practitioners who have cared for her. "I was as nervous as a cat on a hot tin roof the first time I went," says Tweedy, 71. "But they made me feel so comfortable, physically and mentally, and they made sure I was going to feel good after I got home. I felt like I really mattered to them."

Another round of expansions in 1992 yielded a new obstetrics wing, with 16 new labor, delivery, and recovery suites. Later that year, the hospital unveiled the new Neonatal Intensive Care Unit (NICU), which included 46 beds, respiratory care, pathology lab support, and an isolation area for readmitting babies. The NICU was a tremendous new regional asset.

By 1995, a maternal-fetal and neonatal transport service, which provided airlifts for emergency patients throughout the region, was fully established. That same year, Woman's NICU operating room opened, one of only a few in the country dedicated to infant surgery.

In 1996, Romero stepped down, and Executive Vice President Teri G. Fontenot was appointed President and CEO. Fontenot's tenure has been defined by expanding the hospital's services, deepening its reputation in the national arena and setting a course for the future, including the execution of a new campus to accommodate current growth and projected expansion.

Nearing its 30th anniversary, Woman's continued to add new programs, including mobile mammography in 1996. A fully equipped mobile unit began bringing early cancer detection to women in outlying areas and has helped save many lives.

Woman's also continued to contribute to national research. In 1997, the Woman's Health Research Institute and Maternal-Fetal Medicine participated in a nationwide premature labor study of corticosteroids, hormones that help a fetus' organs and tissues mature faster.

#### 1998–2008

In the last decade, Woman's has incorporated numerous leading edge strategies and services so that patients have access to the best possible healthcare.

In 1998, the hospital joined the Vermont Oxford Network, an international collaborative aimed at improving the quality and safety of medical care for newborn infants and their families through research, education and quality improvement projects. The network gives Woman's access to best practices in high-risk infant care.

Methods of caring for mothers and babies continued to evolve, and in 1998, Woman's began featuring couplet care. Nurses were trained to care for both mother and baby, ensuring seamless service and facilitating a culture of bonding and breastfeeding.

Breast health has always been a top priority of Woman's Hospital, and in 1999, the Breast Center added the first of a series of technological advances with nuclear medicine breast imaging, also called scintimammography, a supplemental breast exam used to further investigate abnormalities.



*Vicki Romero, CEO.*



*Maternal-fetal and neonatal airlift service.*



*Operating room located in NICU.*

*Anna and Jeremy Anderson's baby Alayna, born with gastroschisis.*



Expecting their third child, Anna and Jeremy Anderson had received distressing news. The baby suffered from gastroschisis, a congenital condition in which some abdominal organs develop outside the body. It was incomprehensible and frightening, but the Andersons learned there was hope. Doctors with Woman's Hospital's Maternal Fetal Medicine explained that medical advancements since the '60s had increased the gastroschisis survival rate to 90 percent. They quickly developed a treatment plan for the Andersons.

Anna returned to Maternal-Fetal Medicine for regular monitoring throughout her pregnancy so the doctors could ensure the baby's lungs were fully developed for surgery.

"Every week we had an ultrasound," she said. "I thank God for that. It was really reassuring."

Anna's pregnancy progressed normally, and immediately following delivery, baby Alayna was taken to surgery. Pediatric surgeon Faith Hansbrough, MD began the careful process of easing her tiny organs inside her body. Gastroschisis surgery often takes place over a few days and in cases involving multiple organs, like Alayna's, surgeons use a sterile "silo" to cover the exposed abdominal cavity and organs. Hansbrough uses silos in about a third of her gastroschisis cases and says it allows surgeons to work at the right pace.

"When we guide the organs back in, we want to do it gently," she said. "If you force them, you may cause crowding against the diaphragm and impair the baby's ability to breathe."

Alayna came through surgery beautifully, and was moved to Woman's Level III Regional Neonatal Intensive Care Unit (NICU) for close monitoring over the next few weeks. After each organ had resumed its normal function, she was able to join her grateful, relieved parents and siblings at home. Today, she is enjoying the normal life of a toddler.

A year later in 2000, the Cary M. Dougherty Cancer Detection Laboratory and the Woman's Health Research Institute were honored at the International Breast Conference in Brussels, Belgium, for a breast cancer detection test involving the HER 2/neu gene and the drug Herceptin. Also in 2000, Woman's was included among the 100 Top Hospitals: Regional Benchmarks for Success by HCIA and The Health Network.

Woman's continued to advance the work of the Neonatal Intensive Care Unit (NICU). In 2000, the hospital added the NICU Developmental Nursery that offered comprehensive long-term care for children with chronic conditions. A year later, the NICU Infant Care Center opened, providing new single-patient rooms as well as isolated bays for readmitting infants.

By 2003, the Breast Center began use of R2 Computer-Aided Detection (CAD), which provided a third level of breast cancer screening. Woman's was the only imaging facility in the region, and one of few worldwide, to provide triple-read screenings. Three years later, the Breast Center added MRI-guided needle biopsy. It was offered a full year before the American Cancer Society officially recommended the screening for women at high-risk of developing breast cancer.

In 2005, the resolve of the Woman's Hospital community was tested when Hurricane Katrina made landfall on the Louisiana coast. Subsequent flooding caused a massive evacuation from New Orleans. Collaborating with numerous other entities, Woman's led the evacuation of infants and pregnant women from New Orleans hospitals, and helped rescue 122 babies.

The State of Louisiana designated Woman's as the official coordinating organization to manage the evacuation of babies and high-risk pregnant women, a service the hospital would also provide during Hurricane Rita one month later, and during Hurricane Gustav in 2008.

Over four decades, Woman's Hospital's sizeable growth exceeded its current space constraints. By 2004, it became clear that renovating the land-locked facility was no longer a sustainable option. A Future Search Conference held in 2006 gave employees, physicians, nurses, patients, and members of the community a chance to help plan a new campus.

Two years later, Woman's broke ground on its future campus on 225 acres of hospital-owned land. Like its predecessor, the new Woman's will be built on a tireless commitment to improve the health of women and infants. It will respond to the evolving needs of the community for many years to come.

*MRI-guided needle biopsy.*



*Couplet care, nurses care for both mother and baby.*



*Mark Schorr, RT, receiving a high-risk infant arriving before Hurricane Gustav.*

*Future home of Woman's Hospital at Pecue Lane and Airline Highway.*



*Radiologist Marci Gremillion, MD, reviews Sandra's digital mammogram with her.*



Ordinarily, Sandra Hanna would have driven from her home in St. Amant, Louisiana, to Woman's Hospital for an annual mammogram, but these were not ordinary times. With no health insurance due to her husband's loss of work, she had forgone regular mammograms for the last two years. Then in late July, a friend told Hanna she was headed to the hospital's mobile mammography unit in nearby Sorrento and asked her to come along. "I was so glad I did," says Hanna, 57. Her mammogram revealed a mass, which was later determined to be cancer.

"I was so scared," recalls Hanna. With no health insurance, she wasn't sure how she could afford treatment. Woman's Breast Center employees connected Hanna with special grants and Medicaid, which funded subsequent biopsies, surgery, and radiation. Under the care of Dr. Michael Hailey, MD, Hanna is hopeful about the future.

"I cannot imagine where I'd be if I hadn't gone that day," she says.

## New Campus Development

First, there were pink shovels. Next came massive earth movers. The groundbreaking of Woman's Hospital's new campus took place in June, officially launching construction on the new 520,000 square-foot facility. The year ended with the \$350 million project on schedule and on budget, despite interruptions from Hurricane Gustav in September.

Senior Vice President of New Campus Development Stan Shelton and Campus Development Coordinator Roxanne Butler, MSOD RNC, continued engaging the Woman's community in the new hospital's design. In addition to keeping the project on task, they delivered regular employee updates, ran focus groups, and asked for input on the clinical systems that affect patient care.

Employees answered. As they did throughout 2007, staff brought their experience at the bedside to the design process. Serving on a series of committees, they interviewed vendors and studied equipment and finishings, always bearing in mind the needs of Woman's patients. By the end of the fiscal year, these staff teams had selected the nurse call system, the operating room section lights and video integration system, the infant security system, and lighting in both Labor and Delivery and in the Neonatal Intensive Care Unit.

Furthermore, a physician design team helped design an operating room that flows appropriately.

A workspace design team carefully studied how to create an open office floor plan that will both fortify the organization's inherent sense of teamwork and achieve privacy for each staff member.

Employees and volunteers helped "Pick the Brick," by casting votes on the exterior brick style color and shade of the accompanying mortar.

The project's transparent planning process was extended to the greater Baton Rouge community through open house meetings. This process allowed neighbors of the new campus to view the site plan and to inquire about issues like access and traffic.

Construction during fiscal year 2008 was devoted to site preparation, including moving 152,749 cubic yards of dirt – enough to fill LSU's Tiger Stadium – for the purpose of raising the foundation above base flood elevation. The excavation created the opportunity for a 17-acre lake, a necessary drainage feature that will add beauty. Crews worked throughout the fall to drive 1,700 pilings, each 70 feet into the ground.

The new site's ample acreage allows for future opportunities for Woman's Hospital. In August, officials filed a concept plan with the East Baton Rouge City Parish Planning Department detailing a possible mixed-use development on the remaining 97-acre tract. A master site plan was completed in 2008.

*Councilman Darrell Ourso with an area resident at a Community Open House at the Jones Creek Public Library.*



*Teri Fontenot, President and CEO, talking with area residents.*



*Stan Shelton (right), Senior Vice President of New Campus Development, discusses plans during a Community Open House.*



*Roxanne Butler, Campus Development Coordinator (right), showing Gay Middleton and Sande Bardwell details of the new campus.*



*Participants at the Community Focus Group contributed ideas from their experiences to enhance the patient and family experience at the new facility.*



*Architect Jack Ford takes notes from the community.*



*Architect Jeff Stouffer shows the patient room mock-up to the group.*



*The groundbreaking of the future home of Woman's Hospital, June 10, 2008.*

*From left to right:*

*Gregory Heroman, MD*

*Francis Henderson, MD*

*Nancy Richmond*

*W. Dore Binder, MD*

*James C. Atkinson, MD (seated)*

*William Haile, MD*

*Robert diBenedetto, MD*

*Henry Miller, MD (seated)*

*Leo Abraham, MD*

*Frank McArthur*

*N. LaRon Phillips*

*Yolunda Taylor, MD*

*Edward Schwartzburg, MD*



**The New Campus at a glance:**

- A five-story, 520,000 square-foot hospital, with 176 patient rooms, 96 neonatal intensive care unit beds and 28 labor and delivery rooms;
- Two medical office buildings with a combined 260,000 square feet;
- A two-story, 69,000 square-foot support services building;
- A two-story central energy plant;
- Close proximity parking;
- A 17-acre lake surrounded by a 1.25-mile walking trail.







*James C. Atkinson, MD*

#### **In Memoriam—Founders**

James Atkinson, MD, a native of Scooba, Mississippi, was one of Woman's Hospital's 21 founders, its first chief of staff, and a member of its board of directors from 1973 to 1981. Dr. Atkinson served in the U.S. Army Air Force from 1942 to 1946 and was shot down over Romania. He was a POW there for six months. Dr. Atkinson graduated from the University of Alabama in 1948, earned an MD from Tulane in 1952 and was an OB/GYN resident at the University of Arkansas in 1956. He was certified by the American Board of Obstetrics and Gynecology in 1961 and was a member of Nu Sigma Nu medical fraternity, the Baton Rouge OB/GYN Society, East Baton Rouge Parish Medical Society, Louisiana State Medical Society, the South-Central OB/GYN Society, Central Association of OB/GYN and the American Medical Society. Dr. Atkinson practiced medicine in Baton Rouge from 1956 to 1984 and was a longtime supporter and advocate of Woman's Hospital. He passed away on August 21, 2008.



*Henry K. Miller, MD*

On October 28, 2008, the Woman's community mourned the passing of another champion and original founder, Henry K. Miller, MD. A native of Shreveport, Dr. Miller practiced medicine in Baton Rouge for 53 years. He earned a bachelor's degree from Tulane in 1943 and an MD from the LSU School of Medicine in 1946. Dr. Miller was a U.S. Army veteran, and served as a captain in the Army Medical Corps. He was a charter member of the board of directors of the Hospital Albert Schweitzer in Deschepelles, Haiti from 1952 to 1997. Dr. Miller was board certified by the American Board of Obstetrics and Gynecology in 1955, and was a member of the American Medical Association, Southern Medical Association, American College of Obstetrics and Gynecology, Louisiana State Medical Society, East Baton Rouge Parish Medical Society, American College of Surgeons and Central Association of OB/GYN Emeritus. He was elected to serve as Woman's Chief of Staff in 1971. Dr. Miller practiced medicine until his retirement in 2000.

## Highlights of 2008

### Continuing Excellence

**100 Best Places to Work.** In 2008, Woman's Hospital was selected by *Modern Healthcare* as one of the nation's *100 Best Places to Work in Healthcare*. The widely read journal for healthcare executives celebrated facilities that foster excellent work environments. Five thousand hospitals were eligible to apply. Woman's was the only Louisiana healthcare institution selected. The hospital participated in a rigorous selection process, including a random survey of employees and an assessment of workplace practices, policies, and employee benefits.

### Binder Appointed to AHA Committee.

William Dore Binder, MD, Woman's Hospital Board Chair, was appointed by the board of trustees of the American Hospital Association (AHA) as an at-large member of its Committee on Governance (COG). The COG leads grass roots advocacy and provides trustee input into AHA policy development. Binder's two-year term begins January 2009.

**Awards and Excellence.** Labor and Delivery staff nurse Allison "Alli" Vallee Cado, RN, earned the Louisiana State Nurses Association's (LSNA) 2007 Rookie of the Year award.

Lactation Consultant Lois Warrington, RN, was awarded the Medela Gold Standard of Excellence. The award is administered through a peer-nominated recognition program that acknowledges best practices in lactation consulting throughout the United States.

Eight Woman's Hospital nurses were honored at the Annual Baton Rouge District Nurses Association Banquet in May. Honorees were: Nicole Fox, RN, NICU; Kimberly LeBlanc, RN, Labor and Delivery; Kahne Bandaries Lee, RN, Nursing Administration; Aimee Marks, RN, Assessment Center; Amy McCurdy, RN, Mother Baby; Sherry Noel, RN, Oncology; Christine Podner, RN, AICU, PACU; and Trivinia Toussant, RN, Antepartum.

Woman's Hospital Nurse Practitioner Lucie Agosta, PhD, RNC, was named 2007 Entrepreneur of the Year by the Louisiana Association of Nurse Practitioners. Lucie was also appointed to the Louisiana State Board of Nursing in 2008 by Governor Bobby Jindal.

Wendy W. Singleton, RN, received the 2008 Association of Women's Health, Obstetric and Neonatal Nurses Research Poster Presentation Award. Wendy's poster was titled "Factors Influencing a Woman's Decision to Breastfeed: A Social/Ecological Perspective."

Allison "Alli" Vallee Cado, RN.



Trivinia Toussant, RN.

Nicole Fox, RN.



Margaret Gallo, RT, was recognized as the 2008 Technologist of the Year by the Louisiana Society of Radiologic Technologists. Margaret has worked at Woman's since 1991.

**Home Care Honored.** In April, Woman's Hospital's Home Care division was honored at the annual Louisiana Health Care Review Awards Summit for maintaining an acute care re-hospitalization rate at or below 25% between October 2004 and August 2007. Woman's Home Care has one of the lowest rates in the country for rehospitalization of patients and it was one of only three agencies in Louisiana to receive the award.

**Child Development Center Earns Second Star.** Woman's Child Development Center received a second star from the Louisiana Department of Social Services Division of Child Care and Early Childhood Education's Quality Start Program. Founded in 1985, the center serves an average of 107 children annually. Thirty-five percent of families enrolled are affiliated with Woman's Hospital.

### Efficiency

**Electronic Documentation.** In January, computer work stations replaced paper charts in the Neonatal Intensive Care Unit (NICU) and in Respiratory Therapy (RT), continuing the hospital's transition to computerized record-keeping at the bedside. The system reduces human error and increases physician accessibility off site. NICU and RT employees were trained six months prior to the system's integration, and attended refresher courses immediately before the official launch date.

**Patient Tracking in Surgery.** Surgical Services installed the PeriOptimum PathFinder® wireless tracking system, which monitors a patient's path through surgery in real time. A small transmitter is attached to IV tubing as a patient is prepared for surgery, allowing physicians, nurses, staff, and volunteers to track location throughout the procedure. Families view patient status on a flat screen monitor in the waiting room. Each patient is assigned a number to ensure privacy. The technology enables the Surgical Services team to better anticipate next steps, thus minimizing patient wait time and improving management of equipment and staff resources.

*Home Health nurse Susan Simon calling on a patient at home.*



*Woman's Child Development Center.*



*Lakesha Andres, RN, prepares the PeriOptimum PathFinder® wireless tracking system in Day Surgery.*



## Quality

**Smart Pumps.** Woman's Hospital implemented computerized intravenous patient controlled analgesia (PCA) pumps, known as smart pumps. Smart pump safety software allows Woman's to set limits for the pump's use, which helps reduce medication errors. Areas of Woman's now equipped with smart PCA pumps include Labor and Delivery (LD), Antepartal, Mother Baby (MB), Post Anesthesia Care Unit (PACU), the Adult Intensive Care Unit (AICU), Gynecological Surgery (GS), and Gynecological Oncology (GO).

**Bedside Medication Verification.** Bedside medication verification (BMV), bar code technology that ensures medication is dispensed safely to the appropriate patient, was implemented this year. Woman's caregivers now use handheld scanners to match bar codes on patient wristbands with those on medications. BMV helps achieve the "Five Rights" of safe medication administration: the right patient, right medication, right dosage, right route, and right time.

**Team Performance Plus.** A team of physicians and nurses participated in the Harvard Risk Management Strategies Foundation "Team Performance Plus," a comprehensive training program to help develop teamwork in obstetrics. The goal of Team Performance Plus is to create an environment of trust and respect, improve communication in any situation, and implement a predictable, clear work process.

**Perinatal Performance Improvement Project.** Woman's created the Perinatal Performance Improvement Project in 2008 to ensure seamless service to the hospital's tiniest patients – infants. Because an infant's treatment path often includes multiple areas, an interdisciplinary team worked together to study the flow of treatment. Representatives from the Assessment Center, Labor and Delivery, Recovery, the Transition Nursery, Mother Baby, the Center for Newborn and Infant Care, Respiratory Therapy, Neonatology, and Surgery are determining how to best use resources, improving infant care education for all caregivers, and promoting continuous performance improvement.

*Rochelle Zachary, RN, scans medication and patient bar codes to ensure patient safety.*



*OB/GYN resident Jo Anne Barrios, MD, with Marshall St. Amant, MD.*



*Hospitalist Tessa Kincaid, MD, and Aimee Marks, RN, with a patient in the Assessment Center.*

### New Programs and Services

**OB/GYN Residency Program.** Woman's Hospital now includes an OB/GYN academic residency program. More than 160 fourth-year medical school students applied for four resident slots at Woman's, which features rotations in Labor and Delivery, the Neonatal Intensive Care Unit, Surgery Services, and Maternal-Fetal Medicine, and gives access to 65 active physicians as well as 15 LSU School of Medicine faculty members.

**The da Vinci Robot Provides Minimally Invasive Surgery Options.** Woman's added the da Vinci robotic system to its surgical equipment offerings. Robotic surgery is a minimally invasive technique that significantly reduces the recovery time associated with hysterectomies and other gynecological surgeries. With sophisticated cameras and robotic arms operated by physicians, the surgical system provides doctors the access they need to operate, but without the need for open incisions. Recovery time is significantly less, allowing women to return to their normal routines faster.

**Hospitalist Program.** Hospital medicine, or the practice of physicians treating patients solely in a hospital setting, is the fastest growing medical specialty in the nation. This year, Woman's hired

four hospitalists to care for patients without a physician on staff. Hospitalists are growing in popularity nationwide because they reduce the call burden on physicians, allow a hospital to respond to a patient's needs immediately, and offer physicians predictable schedules.

**Changing Lives Through Bariatric Surgery.** In January, Woman's Hospital added bariatric surgery to give women coping with obesity new strategies for a fresh start. The program features a comprehensive approach, starting with a surgical counselor who explains options in a no-pressure setting. A team of weight loss surgeons, registered dietitians, and exercise physiologists work together to ensure patients are not only prepared for surgery, but have the tools they need for long-term success.

**Endoscopy Services Expand Woman's Broad Appeal.** In July, Woman's added endoscopy services, providing a new menu of options for women. Colonoscopies and other endoscopic screenings are conducted in individual rooms, increasing privacy and comfort. Family members are invited to join patients immediately before and after procedures.

*Yolunda Taylor, MD, using the da Vinci robotic system.*



*Cindy Thomas, RN, and Nikki Bourgeois, LPN, train on the da Vinci robot, a minimally invasive surgical technique that reduces recovery time.*

## Woman's Hospital Development Report

In a rural South Louisiana community, a 50-year-old woman receives her first-ever mammogram through Woman's Hospital's Mobile Mammography Coach. A premature newborn is observed at Woman's NICU. A 60-year-old grandmother in need of a colonoscopy prepares for the procedure in a private room. And an 18-year-old sexual assault victim is cared for with confidence and sensitivity by a team of Woman's nurses.

These services are just part of what unfolds daily at Woman's Hospital. The community-owned nonprofit is known not only for its delivery of thousands of infants annually, but also for providing exceptional, varied services to women and infants throughout the region. This work would not be possible without the support of donors, whose investment means the difference between good and extraordinary care.

Woman's Hospital takes stewardship seriously. To maximize donors' gifts, it studies

best practices, analyzes return-on-investment, and partners with other public and private institutions on mutually beneficial projects. For example, Woman's Mobile Mammography Coach Program partners with Mary Bird Perkins Cancer Center and the YWCA's ENCOREplus program to broaden outreach to the underserved and to avoid duplication of services.

This year, Woman's Hospital broke ground on a new campus, a forward-thinking project that will enable it to provide state-of-the-art care in an adaptable environment. Greater Baton Rouge's needs are growing, and Woman's wants to nimbly adjust to those needs.

Woman's Hospital's mission is to improve the health of women and infants, but it does something else as well. When Woman's matches a donor's desire to fill an important healthcare need, it helps make dreams come true.

**Development Council.** The Development Council is comprised of community leaders dedicated to raising funds for Woman's Hospital. The council also governs the Founders and Friends Endowment, which supports the hospital's long-term growth and stability.

### Chair

Michael J. Coogan, MD

### Vice Chair

Hans Sternberg

### Secretary-Treasurer

Missy Epperson

### President/CEO

### Ex-Officio Member

Teri G. Fontenot

### Chair, Board of Directors

### Ex-Officio Member

Nancy M. Richmond

### Members

James C. Atkinson, MD\*

Kevin Curry

Judy Ewell Day

Robert L. diBenedetto, MD

Chancellor Myrtle Dorsey

René Greer

Faith Hansbrough, MD

Rose Hudson

Scharla Kaiser

Rucker Leake III

Kathy McArthur

Jamar Melton, MD

Christy Oliver Reeves

Gabriella St. Amant

Clifford J. Schwartzburg, MD

Steven B. Spedale, MD

Marvin E. Stuckey, MD

Todd Waguespack

\*Deceased

*Susan Eaton, Social Services, chooses clothing funded in part by the Community Care Fund, for Clarissa Barrow's newborn. Clarissa lost everything for her new baby in a home fire.*



**2008 Annual Fund.** The funds raised were dedicated to the Community Care Fund and the vital programs it supports:

- Care for Victims of Sexual Assault
- Neurodevelopmental Clinic
- Special Needs Assistance for Patients

Donations to the Community Care Fund enable Woman's Hospital to positively impact the lives of women, infants, and their families.

### Founders and Friends

#### Endowment Life Members

Dr. and Mrs. Leo M. Abraham\*  
 Dr. and Mrs. Ramon A. Aizpurua\*  
 Dr. and Mrs. Peter W. Aldoretta\*  
 Dr. and Mrs. Timothy G. Andrus\*  
 Dr. and Mrs. James C. Atkinson\*  
 Elizabeth A. Balhoff, MD  
 Angelle Berry, MD  
 Dr. and Mrs. W. Doré Binder\*  
 David A. Boudreaux, MD\*  
 Ms. Melanie Boyce  
 Dr. and Mrs. Frank W. Breaux\*  
 Kenneth Brown, MD  
 Drs. William and Laura Cassidy\*  
 Drs. Deborah and Steven Cavalier\*  
 Dr. and Mrs. V. Dale Coffman, Jr\*  
 Dr. and Mrs. Chet C. Coles\*  
 Dr. and Mrs. Michael J. Coogan  
 Michael Crapanzano, MD  
 Shelley Davies, MD  
 Ms. Judy Ewell Day\*  
 Robert L. diBenedetto, MD\*  
 Dr. and Mrs. Alston E. Dunbar III  
 Dr. and Mrs. Steven D. Feigley\*  
 Teri and Gerald Fontenot\*  
 M. Giles Fort III, MD\*  
 Marcia B. Gremillion, MD,  
 and John Gremillion\*  
 Kathy H. Guidry, MD, and Kevin Guidry\*  
 Jamie and Robert Haeuser\*

Faith Hansbrough, MD  
 Renée Harris, MD\*  
 Mr. and Mrs. Mark Hebert  
 Jack D. Holden, MD\*  
 Mrs. Estelle Holliday\*  
 Charlotte Hollman, MD  
 Mrs. Ralph Howe\*  
 Mr. and Mrs. Cheney C. Joseph\*  
 Lloyd Klibert, MD\*  
 Tim Maher, MD\*  
 Ms. Mary Jane Mayfield\*  
 Mr. and Mrs. Frank D. McArthur II\*  
 Mr. and Mrs. Charles W. McCoy\*  
 Miriam McMains  
 Ty McMains  
 Mr. and Mrs. John Noland  
 Beverly Ogden, MD, and Bayne Dickinson\*  
 W. Robert Pace, MD\*  
 Jane B. Peek, MD\*  
 Mr. and Mrs. N. LaRon Phillips\*  
 Drs. Susan F. and Michael Puyau\*  
 Dr. and Mrs. James Ruiz\*  
 Ms. Donna M. Saurage\*  
 Patricia M. Schneider, MD, and Ronnie Martin  
 Dr. and Mrs. Clifford Schwartzenburg\*  
 Dr. and Mrs. Ellis Schwartzenburg\*  
 Drs. Cynthia and Edward Schwartzenburg\*  
 Henry S. Smith, MD  
 Dr. and Mrs. Steven B. Spedale\*  
 Kimberly M. Stewart, MD

### Community Care Fund Donors

Anonymous  
 Ms. Wendi Allee  
 Ms. Leila Dragon  
 Ohnte Huffmaster  
 Mr. and Mrs. John D. Koontz III  
 Lamar Advertising Co.  
 Maverick Racing L.L.C.  
 Ms. Beth Manning  
 Mr. James Ruble  
 Shobe & Associates  
 Mr. and Mrs. Hans J. Sternberg  
 Tipton Associates  
 Percy and Barbara C. Vinet, Jr.  
 Ms. Evelyn Wilson  
 Bishop Robert C. Witcher

Dr. and Mrs. Marvin E. Stuckey\*  
 Mary H. Thompson and  
 Paul R. Thompson\*  
 Mr. and Mrs. Thomas H. Turner  
 Cynthia A. Voelker, MD  
 Mr. and Mrs. Todd Waguespack  
 Ms. Sandra Wilson  
 Elizabeth G. Winters, MD  
 Robert C. Witcher, Jr, MD  
 Ms. Margaret Womack\*

#### Endowment Legacy Gifts

Estate of Helen S. Barnes  
 Frank and Kathy McArthur  
 N. LaRon Phillips

#### Endowment Annual Gifts

Anonymous  
 Cam Group, LLC  
 Corporate Ideas, LLC  
 Ms. Elizabeth Davis  
 Randall and Karen Fletcher  
 Joel and Janice Hebert  
 Vincent and Sharon Kleinpeter  
 Munzer and Liza Qaddourah  
 James D. and Nancy M. Richmond, Jr.  
 A.J. and Tamara Sabine  
 SophistOccasions, LLC  
 Ms. Lori A. Storer  
 Ms. Melissa Tillery  
 Women in Media

*\*Charter Life Members*

*Circle of Friends committee members Kathy D'Angelo, Lexie Woodard, Julie Hartung, Jennifer Waghalter, Gabriella St. Amant, Candace Kouns, Lynley Dornier, Lisa Distefano and Virginia Monceret.*



*The ROCK-n-CHAIRity event at the Louisiana State Museum.*



*Artists create and contribute one-of-a-kind original art specifically for this event.*

**Woman's Circle of Friends ROCK-n-CHAIRity Auction.** The ROCK-n-CHAIRity Auction was an evening of fun with great food from area restaurants and entertainment by the V-Tones. This spectacular event, organized by Circle of Friends, netted more than \$50,000. Attendees bid on original, one-of-a-kind chairs and art created by local artists specifically for this event. Proceeds supported the Community Care Fund.

### Circle of Friends

#### Chair

Gabriella St. Amant

#### Committee

Kathy D'Angelo  
Lisa DiStefano  
Lynley Dornier  
Candace Kouns  
Julie Hartung  
Virginia Monceret  
Jennifer Waghalter  
Lexie Woodard

#### Rock-n-Chair

Investar Bank  
WAFB Channel 9  
Louisiana State Museum  
Infamedics  
The Boo Grigsby Foundation

#### Love Seat

Lamar Advertising  
Jones Walker  
The Women's Clinic  
Drs. Schwartzenburg,  
Lafranca, and Guidry  
Louisiana Hematology  
and Oncology Associates  
Gabriella and Marshall St. Amant  
Lipseys, LLC

#### High Chair

The V-Tones  
MAPP Construction  
Louisiana Women's  
Healthcare Associates  
The NeuroMedical Center  
Wyndchaser

#### Car Seat

Advanced Videoscopic Surgery  
of Baton Rouge-  
Dr. Drake Bellanger  
Earl K. Long Department  
of OB/GYN  
The Pediatric Clinic

#### Baby Seat

Lydia F. Sims, MD, FACOG  
Louisiana Anesthesiology Group

#### Food Donors

Bonefish Grill  
Cake Palace  
Chef Don Bergeron  
Mansurs on the Boulevard  
Maxwell's Market  
Ruffino's  
Ruth's Chris  
Sullivan's  
Sweet Wishes  
The Wineloft  
Vic's Chophouse

#### Beverage Donors

Baton Rouge Coca-Cola  
Mockler Beverage-Budweiser  
Republic

#### Silent Auction Donors

Acadian Frame and Art  
Baton Rouge Coca-Cola  
Center for Reconstructive  
and Cosmetic Surgery  
Christian Street Furniture  
Eros

#### Flora Belle

Thomas S. Guillot, MD, FACS  
Head Over Heels  
IMELDAS  
Jules Madere Creative Jewelers  
Lee Michaels Fine Jewelry  
Louisiana State University  
Maureen Little of Virtual Bistro  
Michael J. Montalbano, Jr., D.D.S.  
Mignon Faget  
Monceret's Fine Woodworking  
NUNU's Nightlite & Cafe'  
Marie Orgeron  
Patrice Melnick of  
Casa Azul Gift Shop  
Pippen Lane  
Queen Bee- a Petit Paperie  
Raising Canes  
Red Door Interiors  
The Royal Standard  
Samir Oriental Rugs  
Satterfield's  
Yogalates  
Whole Foods  
Wrights' Furniture

#### Artists/In-Kind Donors

Jacqueline Alvares  
Ann Bachmann  
Edye Bachmann  
Lauren Barksdale Hill  
Helen Bolin  
Broujar  
Alvin Broussard  
Kenneth Brown  
Tara Button  
Debbie Coogan

#### John Daige

Erin DeBosier  
Cyndi Deshotels  
Lisa Distefano  
Scott Distefano  
Lynley Dornier  
Sarah Dugan  
Scott Finch  
Mavis Fruge  
Karen Giffel  
Kelly Guidry  
Jill Hackney  
John Darling Haynes  
Patti Holcombe  
Casey Holloway  
Amy James  
Tammy Johnston  
Elayne Kuehler  
Rene Landry  
Lorrae Lantier  
Lilli Leake  
George Marks  
Ann McCanless  
Amy McRae  
Helaine Moyse  
Anne Nelson  
Shawn O'Brien  
Jennifer Poe  
Jennifer Price  
Florine Robin  
Melanie Ronin  
Katie Sims  
Saliha Staib  
Sandra Struppeck  
WAFB Channel 9  
Debbie Waguespack  
John Wax



**Ninth Annual Tour of Ponds.** The Tour of Ponds has raised more than \$54,000 to support cancer care for women. Proceeds from the 2008 event benefited breast and gynecological oncology services at Woman's Hospital.

This year's event showcased private water gardens in the Greater Baton Rouge area. The sponsor party was hosted by Pat Baker. Mr. Charbel Harb, owner of Harb's Oasis, was the Tour of Ponds organizer. The event raised over \$9,400.

**Presenting Sponsor**

Harb's Oasis

**Gold Sponsor**

Collins-Oliver, Inc.  
Thomas E. Foster, DDS  
Jimstone, Co.  
VIP International

**Silver Sponsor**

Echeolon Interiors  
Hub International Gulf South  
June Jackson  
Stanton's Appliances

**Friend**

Crown Enterprises

**Media Sponsor**

House and Home Magazine

**Wine Sponsor**

House and Home Magazine

**Preview Party Beverage Sponsor**

Baton Rouge Coca-Cola

**Tour of Ponds Organizers**

Ruth and Charbel Harb

**Participants**

Sal and Miki Amato  
Dale Andrews  
Pat Baker  
Brett and Lucie Berryhill  
Aileen Carey  
Roger and Kathie Dietrich  
Steve and Harriet Esneault  
Nicholas and Linda Ferris  
Thomas and Shannon Foster  
Penny Gossard  
Lisa Haller  
Charbel and Ruth Harb  
Harb's Oasis  
Jack and Becky Harris  
Ron and Debbie Headrick  
Brent and Nickii Helouin  
Charles and Annalynn Holloway  
Sonny and Kathy Hutton  
Amy Keifner  
Nelson and Deborah May  
Darla O'Conner  
Joel Podolsky  
Charles and Brenda Riddle  
Ronald and JoAnn Smith  
Richard and Doris Truman

*Ninth Annual Tour of Ponds.*



**Memorials.** Memorial gifts are tributes that, like our memories of the honoree, will go on forever. These gifts recognize the recipient in a profound and lasting way.

**Richard Anderson, PhD\***  
Ms. Nancy Crawford  
Dr. and Mrs. Michael J. Coogan

**James Atkinson, MD\***  
Dr. and Mrs. Leo Abraham  
Mr. Jerome Apt  
Dr. and Mrs. Charles Black  
Mr. and Mrs. Bryan Burns III  
Mr. and Mrs. James Coleman  
Ms. Cathy Coates  
Mr. and Mrs. Dudley Coates  
Ms. Nancy Crawford  
Ms. Mary Lou Cutrera  
Lucien and Mary Lou Cutrera  
Ms. Susan Dalton  
Ms. Teri Fontenot  
Ms. Elizabeth Geheber  
General Aviation Modifications  
Lafayette Bone and Joint Clinic  
Dr. and Mrs. Frank McMains  
Ms. Priscilla McElroy  
Mr. and Mrs. Stanley Motsinger  
Ms. Pam Parker  
Ms. Arralee Presley  
Ms. Cynthia Rabalais  
Mr. Oscar Richard III  
Ms. Kathy Robinson  
Mr. and Mrs. Chad Toups  
Mr. and Mrs. Larry Trahan  
Mr. and Mrs. Barry Waguespack  
Dr. and Mrs. Clay Wagenspack

**Camille Baldwin\***  
Auxiliary of the Woman's Hospital

**Patricia Dutsch Bliss\***  
Dr. Elizabeth Hawkins and  
Mr. Robert Hawkins

**Annette Brown\***  
Ms. Nancy Crawford

**W.T. Brown, MD\***  
Dr. and Mrs. Marvin E. Stuckey

**James Harry Cotter\***  
Lynn and Felix Weill

**Mercedes "LaLa" DeJean\***  
Dr. and Mrs. Michael J. Coogan

**James Garland Duffy, Sr.\***  
Ms. Nancy Crawford

**Dr. and Mrs. Travis Harrison**  
Dr. and Mrs. Marvin E. Stuckey

**Richard Joseph Hebert\***  
Ms. Stephanie Minvielle

**Maxine Karbe Holland\***  
Dr. Elizabeth Hawkins and  
Mr. Robert Hawkins

**Ms. Gladys Graves Madigan\***  
Dr. and Mrs. Marvin E. Stuckey

**A. Thomas Montagnino, MD\***  
Dr. and Mrs. Marvin E. Stuckey

**Wanda Hall Myers\***  
Dr. and Mrs. Marvin E. Stuckey

**Lucy Nunnally\***  
Dr. and Mrs. Marvin E. Stuckey

**Claude J. "Pat" Patin, MD\***  
Dr. and Mrs. Marvin E. Stuckey

**Gordon W. Peek, MD\***  
Dr. and Mrs. Marvin E. Stuckey

**Taylor Andrew Reese\***  
Mr. Kevin Karl

**Justin Michael Robinson\***  
Dr. and Mrs. Michael J. Coogan

**Michael Shackleton\***  
Ms. Nancy Crawford  
Dr. and Mrs. Marvin E. Stuckey

**Ricky Sharper\***  
Ms. Nancy Crawford

**Guy Waggenspack, MD\***  
Michael Coogan, MD

**Tributes.** A gift honoring a friend or a loved one is a meaningful way to recognize special occasions, as well as to recognize a caregiver for exceptional service.

**Londyn Celeste Achord\***  
Princess Londyn Productions

**Dr. and Mrs. Harold Brandt\***  
Dr. and Mrs. Leo M. Abraham

**Mr. and Mrs. Felix Weill\***  
Dr. and Mrs. Leo M. Abraham

**Mr. and Mrs. Byron Kantrow\***  
Dr. and Mrs. Leo M. Abraham

**Mrs. Donna Saurage\***  
Jennifer and Jim Moreland

**NICU.** Woman's Hospital focuses on delivering the highest quality treatment and services, along with compassionate care, for infants facing serious illnesses and conditions. Woman's Center for Newborn and Infant Care provides the highest level of care in the region for newborns and infants. The Level III Regional Referral NICU is one of the most unique intensive care nurseries in the nation providing in-house anesthesia and neonatology 24 hours a day, 7 days a week. It is part of a select group of hospitals participating in the Vermont Oxford Network, recognized worldwide as leaders in providing care to premature and critically ill infants.

**NICU Memorial Donations**  
**Brayden Paul Cox\***

Princess Londyn Productions

**Jude\***  
Anonymous

**Kaelan Rudd\***  
Anonymous  
KT Maintenance Company  
Thomas Griffin III, MD

**Logan David Trosclair\***  
Anonymous

*\*Honoree*

**Pink Ribbon Tributes.** The Pink Ribbon Tribute Campaign was created by members of the Woman's Victory Open Committee who wanted to provide a means of honoring those who fight the battle against breast cancer. In its fourth year, the campaign has been well received by the community.

**Nan Abbitatti\***  
Brigette Blades

**All Breast Cancer Survivors**  
Katherine Boyle  
Robert Dillard  
Terry Janca  
Sara Jones  
Marilyn Moorman  
Wal-Mart  
Joe Wiley

**Ann Arbour\***  
Candy Arbour

**Margaret Appel Atchley\***  
Amy M. Atchley

**Danielle Bayham\***  
Sharon Salzer

**Jo Wafer Byers\***  
Karen C. Tabor

**Martha Jo Byers\***  
Customers of Cross-Stitch  
Corner, LLC

**Tammy Callegan\***  
Sharon Salzer

**Mary Carter\***  
Anonymous

**Jane Couvillion\***  
Annie and Brett Kriger

**Mary Cumbus\***  
Shawn Miller

**Elsie Flower\***  
Mrs. Frances E. Groves

**Eileen Ann Freeman\***  
Anonymous

**Cindy Funderburg\***  
New Horizons Sunday  
School Class

**Helen Hartman\***  
Customers of Cross-Stitch  
Corner, LLC

**Linda Holloway\***  
Julie Kay Dean

**Ann Kriger\***  
Brigette Blades  
Mimi Clunan  
Kathy Braun

**Jann Lamy\***  
Brigette Blades

**Kate Landry\***  
Tessa Landry

**Sue Latour\***  
Janelle Welchel

**Colleen Little\***  
Ashley Ouber

**Laura Marshall\***  
New Horizons  
Sunday School Class  
Laura Marshall

**Thyre McMains\***  
Sue Rainer

**Shawn Miller\***  
Cross-Stitch Corner, LLC

**Bill Moorman\***  
Mrs. Bill Moorman  
JoAnne Hiter

**Myrtle Mullins\***  
Carl and Ann Rhoads

**Mamie Dee Plauche\*\***  
Shawntell Plauche

**Annie Grace Rollo\***  
Shawn Miller

**Sarah Ruggiero\***  
Janelle Welchel

**Jean Scheper\***  
Julye Lerma

**Barbara Schwartzburg\***  
Sue Zimmerman

**Joseph Stockman\***  
Ben and Patricia Ragusa

**Janene Stokes\***  
Customers of Cross-Stitch Corner, LLC

**Virginia Sweet\***  
Lynn and Felix Weill

**Jan Trimble\***  
Reverend Rhonda Feurtado

**Emilie Villarejos\***  
Cindy Olivier

**Brenda Waggenspack\***  
Ms. Tracie Vidrine

**Betty Waldren\***  
Anonymous

**Idel Waltman\***  
Customers of Cross-Stitch Corner, LLC

*\*Honoree*

Woman's Hospital's Mobile Mammography Coach, funded by donors, provides digital mammograms for the underserved and for those unable to come to the breast center.



*Lisa Baker, RT, at the Louisiana Correctional Institute for Women during a monthly mobile coach visit.*

**Ninth Annual Woman's Victory Open.** The ninth annual Woman's Victory Open Golf Tournament presented by Capital One raised more than \$139,000 for the mobile mammography coach and outreach program at Woman's Hospital. Congratulations to the members of Woman's Victory Open Committee, whose year-round work drives the success of this event!

**Honorary Chair**

Sue Rainer

**Chair**

Scharla Kaiser

**Vice Chair**

Francine Groves

**Development Chair**

Patsy Picard

**Players and Gifts Chair**

Kara Hill

**Logistics Chair**

Francine Groves

**Sponsorship Coordinator**

Brenda Guy

**Pink Ribbon Tree Coordinator**

Ann Kriger

**Silent Auction Coordinator**

Bobbie Stiglets

**LPGA Pro Coordinator**

Nancy Knapp

**Premium Player**

**Gift Coordinator**

Kathleen Garrison

**Player-Team Liaison**

**Co-Coordinators**

Queenie Hebert

Mary Gay Johnson

**Awards Coordinator**

Bobbi Grigsby

**Clubhouse Co-Coordinators**

Agnes Harrop

Michael Ann Crawford

**Golf Course**

**Logistics Coordinator**

Cindy McGourty

**Putting Contest Coordinator**

Susan Brazan

**Food and Beverage**

**Coordinator**

Gay Lazare

**Volunteer Coordinator**

Jane St. Amant

**Photography Coordinator**

Cathy Walker

**Communications**

**Co-Coordinators**

Mary Broussard

Pamela Malara

**Ditty Bag Coordinator**

Vickie Theriot

**Past Chairs**

Kathy McArthur

Kristen Wray

Patsy Picard

Cathy Walker

Sue Rainer

**Past Honorary Chairs**

Lynn Bradley, 2006

Pamela Malara, 2005

Carol Dykes, 2004

Kathleen Frith, 2003

Bunny Jumonville, 2002

JoAnn Slaydon, 2001

Alice Greer, 2000

**Committee Members**

James Atkinson, MD\*

Cheri Ausberry

Carol Bonnacaze

Lynn Bradley

Michael Ann Crawford

Julie Daboval

Ginger Dantoni

Carol Dykes

Victoria Griffin

Lynell Janies

Cole Jennings

Stacy Joffrion

Kathy McArthur

Mary Morton

Shelli Patty

Sarah Rainwater

Sue Sheets

**Sponsors**

**Presenting Sponsor**

Capital One

**Major Sponsor**

Investment Professionals, Inc.

**Champions of Hope Sponsor**

Brian Harris BMW

**Premier Player Gift Sponsor**

Bradley-Blewster & Associates

**Pro-Six Sponsor**

Long Law Firm, LLP

**Awards Ceremony Sponsor**

Louisiana Lottery Corporation

**Communications Sponsor**

McDonald's of Baton Rouge

**Hospitality Sponsor**

Saia Electric Incorporated

**Photography Sponsor**

Entergy

**LPGA Pro Co-Sponsors**

Baton Rouge Coca-Cola

FUZE

**Pink Ribbon Sponsor**

Postlethwaite & Netterville

**Championship Sponsors**

Air Products and Chemicals

The Benefits Solution Group

Cajun Industries, LLC

Environmental Technical Sales, Inc.

Franciscan Missionaries

of Our Lady Health System

Humana Health Benefit Plan

of Louisiana, Inc.

Carol and Bob Jennings

Milton J. Womack, Inc.

Our Lady of the Lake RMC

Pathology Group of Louisiana

Price LeBlanc, Inc.

Regions Bank

Valley Services, Inc.

Westport Linen Services, LLC

\*Deceased



*Woman's Victory Open players enjoying the tournament.*

*The late Dr. James Atkinson at the 2007 Woman's Victory Open Golf Tournament.*

**Team Sponsors**

Bank of St. Francisville  
 DEMCO  
 Financial Consulting Services  
 Grady Crawford  
 Construction Company  
 Wayne and Brenda Guy  
 Hannis T. Bourgeois, LLP, CPAs  
 JP Morgan Chase  
 Sharon Lee, MD  
 LUBA  
 Nortrax South  
 Rubicon, LLC  
 Turner Industries

**Hole-In-One Sponsors**

Brian Harris BMW  
 Louisiana Breast Specialists  
 Mary E. Christian, MD  
 Michael W. Hailey, MD  
 Cecilia M. Cuntz, MD  
 A. Wilbert's Sons, LLC  
 Arrighi Simoneaux  
 Commercial Construction  
 Baker, Donelson, Bearman,  
 Caldwell, & Berkowitz, P.C.  
 BancorpSouth  
 Baton Rouge Printing Co.  
 Bengal Products, Inc.  
 Buquet & LeBlanc, Inc.  
 C.J. Brown  
 Edgen Murray Corporation  
 Gerry Lane Enterprises  
 Jones Walker  
 Stephen and Dee Keller  
 KPMG, LLP  
 LEMIC Insurance Company  
 Bob and Sue Rainer  
 John Turner and Jerry Fisher

**Award Sponsor**

Lee Michaels Fine Jewelry

**Pro Six Challenge Sponsors**

Kenneth and Dixie Blue  
 Chinkie Cointment  
 William and Donna Constant  
 Fitness Rx  
 Joe and Pam Malara  
 Patsy Picard  
 Danny and Kristen Wray

**Player Sponsors**

Acadian Frame & Art  
 Cocreham Brick and Stone, Inc.  
 Fort Dearborn Life  
 Insurance Company  
 Glenn G. Shaheen &  
 Associates, Inc.  
 Sheila Papelbon  
 Gracie Purvis  
 Randall's Hair Studio  
 Lynn Robertson  
 Janet Simoneaux  
 Tempco Services, Inc.

**Friend Sponsors**

Calais Dermatology Associates  
 Episcopal Church of  
 the Holy Communion  
 Gilsbar, Inc.  
 Lou and A.J. Harris  
 Jeremy and Dana Koger  
 Louis Mechanical Contractors, Inc.  
 Mattress Direct  
 M.W.L. Architects, Inc.  
 Mack Picard  
 Premier Golf Events  
 RE/MAX  
 Richard Oil and Fuel, LLC  
 Sun Life Financial

**In-Kind Sponsors**

Advanced Office Systems  
 The Ambrosia Bakery  
 Ascension Ready Mix, Inc.  
 Bank of New York  
 Baton Rouge Coca-Cola  
 Baum's Fine Pastries  
 Billy Heroman's Flowerland  
 Black Castle Wine  
 Harry Brown, DDS  
 Cake Goddess, LLC  
 Capital One  
 Community Coffee  
 Countrywide Home Loans  
 Deano's Pizza  
 Entergy  
 Fresh Pickins Market  
 FUZE  
 Wayne and Brenda Guy  
 Kara Hill  
 Holiday Inn Select  
 Jules Madere Creative Jewelers  
 Kleinpeter Farms Dairy, LLC  
 Lindsey's Entertainment  
 Louisiana Lottery Corporation  
 Mellow Mushroom  
 Mockler Beverage-Budweiser  
 The Original Honey  
 Baked Ham Company  
 Premier Golf Events  
 Principal Financial Group  
 Regions Bank  
 Rotolo's Pizzeria  
 RE/MAX First  
 S-Scents Aromas  
 Saurage Realtors

Heather Scimemi with M.R. Delee  
 Southern Families Magazine  
 State Farm  
 Jane St. Amant  
 Tanger Outlet Mall  
 Tony's Seafood  
 US Bank  
 US Food Service  
 Varsity Sports  
 Charles and Cathy Walker

**Silent Auction Sponsors**

Ray Anders  
 Jason Baldwin  
 Beau Chene Country Club  
 The Bluffs Country Club and Resort  
 Camelot Club  
 Carol Creel  
 Carter Plantation  
 Country Club of Louisiana  
 Edwin Watts Golf  
 Golf Etc.  
 Brenda Guy  
 Kara Hill  
 The Island Country Club  
 Jeannie Frey Rhodes Photography  
 Money Hill Golf and Country Club  
 Noura Holistic Massage  
 Therapy and Skin Care  
 Red Stick Internet  
 Robert Roth  
 Rachel Schexnayder with M.R. Delee  
 Shelton's Gallery  
 Squire Creek Country Club  
 The University Club  
 Danny and Kristen Wray



**Hall of Stars.** The Hall of Stars was created to celebrate babies born at Woman's Hospital. Family and friends recognize a baby's birth and by so doing, help to further the mission of Woman's Hospital.

**Carter Matthew Adamo\***  
M. Valetton Adamo

**Hayes Channing Albin\***  
Mr. and Mrs. Don W. Courtney

**Madison Paige Andrews\***  
Ronald Andrews, MD

**Angela Elizabeth Authement\***  
Michael and Susan Authement

**Anthony Michael Authement\***  
Michael and Susan Authement

**Mylie ReShay Avants\***  
Debra Avants

**Kyrielle Tionne Badie\***  
Koniquica Badie

**Zane Connor Baggett\***  
Jacquelyn Irene Bacon

**Julia Grace Bergeron\***  
Karen LeBlanc

**Aiden Cole Bordelon\***  
Wanda Y. Shaffer

**Christopher Clark Boyce\***  
Robert and Julia Boyce

**Leighton Grace Boyce\***  
Robert and Julia Boyce

**Isabel Adorestine Carbo\***  
Christy Renaud

**Emma Grace Coon\***  
Ken and Lori Coon

**Camille Elyse Cotton\***  
Annette and Blake Cotton

**Ethan Andrew Darlington\***  
Shannon Galloway

**Maci Marie DeLaneuville\***  
Brandi DeLaneuville

**Sophia Copeland Dominguez\***  
Jean O. Copeland

**Cooper Louis Dutruch\***  
Hugh and Lena Bateman

**Taylor Elizabeth Easley\***  
Karen Bedell Fourrier

**Elizabeth Anne Faller\***  
Eagle Drydock and  
Marine Repairs, LLC

**Grace Catherine Faller\***  
Eagle Drydock and  
Marine Repairs, LLC

**Sean Michael Foster\***  
Thasia Ernest and  
Stephanie Kessinger

**Samuel Michael Garza\***  
Loretta David

**Braedyn McKenzi Gauthier\***  
Alice Womack

**Emma Katherine Glaser\***  
Kenneth and Peggy LeBeau

**Emily Claire Greene\***  
Virginia L. Walker

**Oudrey Jules Gros IV\***  
Oudrey and Jeanne Gros

**Zant David Gurney\***  
Benda G. Tynes

**Bryelle Marie Guzzardo\***  
Ashley and John Guzzardo

**Jaris James Hamilton\***  
Joseph Hamilton III

**Annalee Claire Hancock\***  
Laurie Ann Hancock

**Ka'Rynn Michelle Harness\***  
Trudy Thomas

**Haley Lynn Higgins\***  
Lynn and Marcelle Sherrill

**Irianna Angelle Homes\***  
Linda Harleaux

**Kaleb Lee Howell\***  
Virginia Kay Howell

**Audrey Taylor Hughes\***  
Diane L. Hughes

**Karen Colleen Hughes\***  
Diane L. Hughes

**Mark Elvin Hughes\***  
Diane L. Hughes

**Shana Claire Johnson\***  
Steve and Gail Douglas

**Isabel Grace Jones\***  
Kim Corkern

**Tarryn Rylee Laquerre\***  
Christopher and  
Stephanie Laquerre

**Gregory M. Lazarre\***  
Mark and Vera Lazarre

**Lara S. Lazarre\***  
Mark and Vera Lazarre

**Jonah Paul Lim\***  
Benedict Lim

**Aspen Lea Linxwiler\***  
Randy Lorio and  
Tonny Linxwiler

**Evan Michael Loupe\***  
Jeannie Pitre

**Rebecca Susanna Lowe\***  
Mr. and Mrs. Eugene Groves

**Rancher Kahne Miller\***  
Shelia Rancher

**Brody Clinton Mitchell\***  
Shawn and Melissa Mitchell

**Hampton Pierce Monday\***  
Sybil Monday

**Gabrielle Alyse Mora\***  
Glenn and Melissa Marino

**Speed Jared Moran\***  
Cathy Moran

**Ann Corinne Ourso\***  
Amber H. Ourso

**Owen Alexander Peck\***  
Christine Arbo Peck

**Hailey Elizabeth Perry\***  
Ronald Andrews, MD

**Jourdan A.M. Porche\***  
Michelle Jean Pierre

**Meghan C. Porche\***  
Michelle Jean Pierre

**Clayton Alexander Renaud\***  
Christy Renaud

**Glenn Eliza Riley\***  
Kenneth Lloyd Riley

**Brantly James Rivet\***  
Brandon and Michelle Rivet

**Laurel Elizabeth Roberts\***  
Enid Roberts

**Ella Grace Saccaro\***  
Rodney and Susan Nijoka

**Lacie Emily Sierra\***  
Suzanne and Michael Cieslak

**Michael Allan Sims III\***  
Laura and Mark Normand

**Anna Katherine Terrell\***  
Courtney Hearod

**Caroline Nicole Thomas\***  
Mr. and Mrs. Phil Thomas  
Mr. and Mrs. Robert White

**HayLee Renee' Nelton Touchet\***  
Steve and Karen Nelton

**Sophia Rose Tureau\***  
Tony Tureau

**Abigale Laine Veillon\***  
Christy Renaud

**Carter Paul Walker\***  
Cindy DeLaune

**Celeste Marie Walter\***  
John and Susan Walter

**Anna Katherine Wells\***  
Jim and Kathy Deshotels

*\*Honoree*

*Woman's was a point of refuge for Louisiana NICU babies.*



*An NICU infant arriving before the storm.*



*Melissa Letort, RN, oversees the return of an infant evacuated before the storm.*



As with Hurricanes Katrina and Rita in 2005, Woman's Hospital served as a point of refuge for Louisiana neonatal intensive care unit babies, high-risk mothers, and other patients who were evacuated from the areas affected by Hurricane Gustav. Woman's cared for 45 infants from communities in southeast Louisiana. Of the 45 infants, 17 were born at Woman's Hospital. These precious patients, the tiniest victims of Hurricane Gustav, along with 22 adult patients and their families were warmly welcomed and received the life-saving, critical healthcare services and support they needed.

**Hurricane Gustav/Ike Donors**

- |                                  |                            |                                    |
|----------------------------------|----------------------------|------------------------------------|
| Julie Reynolds                   | Ms. April Doyle            | Mr. Andrew Pecquet                 |
| Janice Lamy                      | Ms. Jennifer Evans         | Ms. Mary Perino                    |
| Shiloh Missionary Baptist Church | Ms. Heather Felter         | Ms. Terri Peterson                 |
| Charitable Foundation            | Ms. Michelle Fontenot      | Ms. Amy Phillips                   |
| VHA Foundation                   | Ms. Kelli Frederick        | Mr. and Mrs. Mark Phillips         |
| Lynn and Felix Weill             | Ms. Janice Glas            | Procter & Gamble Distributing Co.  |
|                                  | Ms. Betty Gray-Cameron     | Quota International of Baton Rouge |
| <b>In-Kind</b>                   | Mr. Troy Green             | Ms. Jodi Schram                    |
| Abbott Nutrition                 | Ms. Trinyon Heck           | Ms. Anna Skelton                   |
| Ms. Landon Abshire               | Ms. Michelle Hilterbran    | Target - Ms. Vanessa Fontenot      |
| Ms. Ginna Aker                   | Ms. Dianna McMinn          | Ms. Elizabeth Thorton              |
| Associates in Women's Health     | Ms. Caroline Messenger     | Threads of Love Foundation         |
| Ms. Sue Bonacorso                | Mr. Jim Mitchell           | Ms. Bree Tilyou                    |
| Dr. and Mrs. Andrew Boyer        | Mr. and Mrs. Bret Montague | Mr. and Mrs. Cam Wheeler           |
| Ms. Kandi Brewster               | Mr. James Morris           | Ms. Kelli Woods                    |
| Capital Area CASA Association    | Mr. and Mrs. Ben Morton    | Ms. Jerilyn Woodson                |
| Ms. Nicole Clark                 | Mr. Brannon Odgen          | Ms. Stephanie Young                |
| Mr. Derrick DeLaTorre            | Mr. Jamie Palla            |                                    |
| Mr. and Mrs. David Doub          | Ms. Cathy Patton           |                                    |

**In-Kind Donations**

- Lauren Boydston
- Jill Christal
- Dawn Giron-Hayward
- Carter Graham
- Granny Hugs Quilters
- Leonore Heavey
- Kathy Holtzclaw
- Jefferson United Methodist
- Missy Latino
- Rebecca Nictakis
- Jamie Palla
- Carolyn Pittman
- Red Stick Smocking Guild
- Remember Me Quilt Guild
- Sylvia Samson
- April D. Wade

**New Campus Donors**

- Baton Rouge Area Foundation
- Missy Epperson
- Mark Hall
- Paul Kirk
- Cynthia Rabalais
- Sephora

*Woman's Hospital is pleased to recognize all donations and pledges for fiscal year October 1, 2007—September 30, 2008. Despite our best efforts, errors and omissions may have occurred. If so, please accept our apology and notify: Woman's Hospital Office of Development PO Box 95009 Baton Rouge, LA 70895-9009 225-924-8720 development@womans.org*

## Financial Performance

Fiscal year 2008 was an exceptional year for Woman's Hospital, despite the national recession and declining stock market. The 9.1% operating margin exceeded the national average, due to sound fiscal management, a progressive line of services, and an organization-wide commitment to innovation and efficiency. These elements helped simultaneously guard the bottom line while meeting the growing needs of current and future patients throughout the region.

Inpatient and outpatient revenues were up 8.5% from 2007. The year ended with 21,035 admissions, 75,419 patient days, 8,483 births and 7,380 surgeries. The increase in inpatient revenue was due to a rise in the number of deliveries and in the number of neonatal intensive care patient days. The increase in outpatient revenue resulted from increases in breast procedures and the addition of hospitalists to care for the growing number of patients without a physician. All operational targets were achieved.

Woman's revenue base is solid, due to a favorable payer mix, in which managed care represents 54.9% of gross revenue. All contracts are on a percent-of-charge basis. The hospital continued its commitment to community-wide service by providing charity care and participating in Medicare and Medicaid, which pay below actual cost. Good resource management and a commitment to innovation and efficiency enable the hospital to serve those unable to pay the total cost of care. Furthermore, hospital leadership continued to take a strong stand to ensure that Medicaid reimbursement to healthcare institutions is not further

reduced. Woman's supported a bill that passed during the 2008 Louisiana legislative session that protects hospitals that provide Level III Regional Neonatal Intensive Care Units or a Medicaid utilization rate of twenty-five percent or greater from future Medicaid reimbursement reductions.

Operating expenses were up 4.2% from the previous year due to both higher costs and the addition of new services that will produce a sizable return on investment in the future. Higher supply costs were related to the addition of a robotic surgery program that significantly reduces patient pain and recovery time. Professional services increased as the hospital worked with consultants to improve operational efficiency. Other increases were related to higher utility costs, maintenance contract expenses, and hospitalist insurance premiums. Salaries and benefits rose 4.9% and accounted for 62.2% of total operating expenses. Identifying opportunities to reduce costs without compromising quality care remained a top priority.

Woman's profitable operations generate measurable growth patterns, excellent debt service coverage, and increasing liquidity. Cash on hand was positively affected by strong cash flow from operations, and remained strong at 308 days compared to the national median of 157 days. Hospital leadership used excess cash on hand to support projects associated with the new campus, scheduled for completion in 2011. While investment returns nationwide were unfavorable, Woman's portfolio outperformed the balanced index. Debt service coverage remained strong at 4.5 times for the fiscal year.



**Summary of Financial Contributions to the Baton Rouge Community Through Community Benefit Programs**

The hospital is an active, caring member of the community it serves. In carrying out its mission of improving the health of women and infants, the hospital has served the community by:

**Providing Care for Persons Living in Poverty**

Charity Care	\$ 240,000
Unreimbursed Cost of Medicaid Program	9,626,000
Subsidized Health Services	
Emergency Services and Clinical Consultation	1,036,000
Better Beginnings Program	86,000
HIV Case Management	186,000
Subspecialty Clinics	339,000
Unreimbursed Hospitalists and Nurse Practitioner Costs	834,000

**Providing Benefits to the Community and State**

Community Education of Health Issues	541,000
Support of Community Service Organizations	
Family Road of Greater Baton Rouge	4,000
Susan G. Komen Breast Cancer Foundation	5,000
In-Kind Printing	21,000
Grants and Awards to Service Organizations	19,000
Subsidized Health Care	
Care for Sexual Assault Victims	24,000
Un-sponsored Research	322,000
Emergency Management	501,000
	<hr/>
Total Financial Support	<u>\$13,784,000</u>

*While the above list is not all-inclusive, it represents the significant community benefits provided by the hospital.*

## Financial Review

	<b>2008</b>	<b>2007</b>
	(In Thousands)	(In Thousands)
<b>As a result of our careful planning and effective resource management:</b>		
We generated revenue from inpatient services such as nursing care, laboratory tests, and pharmaceuticals	\$211,323	\$189,124
We generated revenue from outpatient services such as home health, maternal-fetal medicine, laboratory, imaging, therapy and related healthcare services	99,051	96,996
We generated revenue from nonpatient services, such as investment income, cafeteria, child care center, and wellness center	(3,365)	31,132
Total Earned Revenue	<u>\$307,009</u>	<u>\$317,252</u>
<b>As part of our ongoing commitment to the community:</b>		
We did not receive payment for services provided to patients unable or unwilling to pay	\$ 2,377	\$ 1,969
We did not receive full payment for Medicare and Medicaid patients and from other government programs	74,248	69,314
We provided discounted services to patients with private insurance	35,677	33,535
Total Revenue Unpaid	<u>\$112,302</u>	<u>\$104,818</u>
Net Revenue	<u>\$194,707</u>	<u>\$212,434</u>
<b>In order to provide the necessary resources for excellence in patient care:</b>		
We paid employee wages, salaries, and benefits	\$119,927	\$114,374
We purchased medications, medical and surgical supplies, and food	24,694	23,213
We incurred other operating expenses such as utilities, depreciation, interest, maintenance, insurance and continuing education for employees and patients	45,915	45,659
Total Operating Expenses	<u>\$190,536</u>	<u>\$183,246</u>
<b>In order to ensure the hospital's future growth and stability:</b>		
We purchased new equipment, replaced old equipment, incurred building and renovation expenses, reduced long-term debt, and provided for future growth	\$ 4,171	\$ 29,188
Total Operating and Capital Expenses	<u>\$194,707</u>	<u>\$212,434</u>

### Medical Statistics

	2008	2007	2006	2005
Adult Admissions	12,187	12,136	12,607	11,780
Adult Average Length of Stay	2.72 days	2.77 days	2.81 days	2.78 days
Births	8,483	8,333	8,705	8,111
Patient Days	75,419	74,887	77,176	73,214
NICU Discharges	1,550	1,511	1,569	1,508
Inpatient Surgeries	2,807	2,840	2,844	2,818
Outpatient Surgeries	4,573	4,849	4,522	4,759
Outpatient Visits	125,788	133,271	130,939	125,670
Breast Procedures	44,294	44,111	42,578	40,011
Home Health Visits	12,440	17,447	17,887	16,933
CT Scans	2,359	2,587	2,251	2,121
Neonatal Transports	103	87	81	137
Pap Smears	86,743	82,857	86,236	84,193
Maternal-Fetal Medicine Office Visits	8,215	8,768	8,998	8,043
Outpatient Clinic Visits	582	529	869	1,018

### Gross Patient Revenue by Service

	2008	2007	2006	2005
Obstetrics	22%	21%	23%	21%
Gynecology / Oncology / Surgery	12%	10%	10%	11%
Newborn	5%	5%	5%	5%
Neonatal ICU	29%	30%	28%	30%
Total Inpatient	68%	66%	66%	67%
Outpatient Surgery	9%	9%	9%	9%
Other Outpatient	23%	25%	25%	24%
Total Outpatient	32%	34%	34%	33%
	100%	100%	100%	100%

### Gross Patient Revenue by Financial Class

	2008	2007	2006	2005
Insurance*	54%	54%	51%	53%
Medicaid*	40%	40%	43%	41%
Medicare and Champus*	5%	5%	5%	5%
Self-Pay+	1%	1%	1%	1%
	100%	100%	100%	100%

\* Pays less than 100% of billed charges based upon a contractual arrangement or governmental regulations.

+ Pays less than 100% of billed charges based upon qualifications for financial assistance, discount for package priced services, or prepayment for services.

## Woman's Hospital Leadership

### **Board of Directors Chair**

W. Dore Binder, MD

### **Chair Elect**

Markham McKnight

### **Secretary-Treasurer**

Susan Puyau, MD

### **President/CEO**

Teri G. Fontenot

Robert S. Greer, Jr.

Edward Schwartzburg, MD,

Chief of Staff 2008

Francis Henderson, MD

Jamar Melton, MD

Amy Phillips

N. LaRon Phillips

Mike Polito

Nancy M. Richmond

Ellis Schwartzburg, MD

Robert Stuart, Jr.

### **Vice Presidents**

#### **Senior Vice President**

##### **Financial Services**

Stephanie Anderson

#### **Senior Vice President**

##### **Medical Staff Services**

Nancy Crawford

#### **Senior Vice President**

##### **Operations**

Jamie Haeuser

#### **Senior Vice President**

##### **Chief Nurse Executive**

Patricia Johnson, RN, MN

#### **Senior Vice President**

##### **New Campus Development**

Stan Shelton

### **Vice President**

#### **Employee Services**

Donna Bodin

### **Vice President**

#### **Information Systems**

Paul Kirk

### **Vice President**

#### **Finance**

Julia Lively

### **Vice President**

#### **Support Services**

Greg Smith

### **Vice President**

#### **Infant/Pediatric Services**

Staci Sullivan, MSN, APRN-BC

### **Vice President**

#### **Chief Development Officer**

Lynn Weill

### **Medical Staff Leadership**

#### **Chief of Staff**

Edward Schwartzburg, MD

### **Vice Chief of Staff**

Giles Fort, MD

### **Secretary-Treasurer**

Nicolle Hollier, MD

### **Chief of Department of Clinical and Support Services**

Jan Benanti, MD

### **Chief of Anesthesiology**

Timothy Maher, MD

### **Chief of Maternal-Fetal Medicine**

Marshall St. Amant, MD

### **Chief of Medicine**

Ronald Andrews, MD

### **Chief of Neonatology**

Steven B. Spedale, MD

### **Chief of Obstetrics-Gynecology**

Yolunda Taylor, MD

### **Chief of Pathology**

Beverly Ogden, MD

### **Chief of Pediatrics**

Trey Dunbar, MD

### **Chief of Radiology**

Chet Coles, MD

### **Chief of Surgery**

Samuel Harelson, MD

### **Chief of Urology**

Mark Posner, MD

### **Directors**

#### **Accounting**

Wanda Allphin

#### **Building Operations**

Thomas Gautreau

#### **Center for Newborn and Infant Care**

Darcy Gann, MSN, RNC

#### **Child Development Center**

Hope Juge

#### **Compliance Officer**

Robert Hawkins

#### **Educational Services**

Joan Ellis, RN, PhD

#### **Environmental Services**

Orlando DeMoss

#### **Food and Nutrition Services**

Margie Ricks

#### **Gynecology/Oncology**

Mary Ann Smith, RN

#### **Health Information**

##### **Management**

Danielle Berthelot

#### **Home Care Services**

Claudia Kammer, RN

#### **Imaging Services**

Cynthia Rabalais

#### **Information Systems**

Rhett Roy

### **Laboratory/Pathology**

Brett Schelin

### **Managed Care**

Sherry Poss

### **Marketing and Business Development**

Janice Lamy

### **Maternal-Fetal Medicine**

Linda Hall

### **Medical Director**

Ken Brown, MD

### **Mother/Baby**

Dana Vidrine, RN

### **Nursing Administration**

Lori Denstel, RN

### **Obstetrical Services**

Cheri Johnson, RN

### **Patient Accounting**

Geralyn Thibodeaux

### **Patient Services**

Monica Metz

### **Perioperative Services**

Laura Clouatre, RN, MSN

### **Pharmacy**

Peggy Dean

### **Quality and Utilization Management**

Del Currier, RN

### **Respiratory Services**

Danette Legendre

### **Retail Services**

Lisa Garland

### **Social Services/ Outpatient Clinics**

Beth Manning

### **Wellness Services**

Chrissie Olsson

**Woman's Hospital Foundation.** The hospital is a not-for-profit organization that opened in 1968 and was founded by obstetricians and gynecologists who envisioned a hospital that specialized in caring for women and infants. The members of Woman's Hospital Foundation include physicians and community leaders who are dedicated to preserving the hospital's mission.

**Founders**

Leo Abraham, MD  
 William C. Haile, MD  
 Lamar L. Lambert, MD

**Voting**

Mathew Abrams, MD  
 Sandra Adams  
 Ramon Aizpurua, MD  
 Timothy Andrus, MD  
 Clinton Aubert, MD  
 Debra Baehr, MD  
 Phillip Barksdale, MD  
 Jan Benanti, MD  
 W. Dore Binder, MD  
 David Boudreaux, MD  
 Frank Breaux, MD  
 Jeffrey Breaux, MD  
 Randall Brown, MD  
 Joseph Broyles, MD  
 Malton Bullock, MD  
 Deborah Cavalier, MD  
 Chester Coles, MD  
 Michael Coogan, MD  
 Sarah Davis, MD  
 Barbara Deming, MD  
 Robert diBenedetto, MD  
 Steven Feigley, MD  
 M. Giles Fort, III, MD  
 Lisa Gautreau, MD  
 Gregory Gelpi, MD  
 Marcia Gremillion, MD

Charles Gruenwald, MD  
 Kathy Guidry, MD  
 Faith Hansbrough, MD  
 Renée Harris, MD  
 Francis Henderson, MD  
 Gregory Heroman, MD  
 Jack Holden, MD  
 Wendy Holden-Parker, MD  
 Nicolle Hollier, MD  
 Jeffery Janies, MD  
 Shawn Kleinpeter, MD  
 Sharon Knight  
 Ann Lafranca, MD  
 Charles Lawler, MD  
 Sharon Lee, MD  
 Michael Leggio, MD  
 Fred Lind, Jr., MD  
 C. William Lovell, Jr., MD  
 Frank McArthur, II  
 Fritz McCameron, PhD  
 C. Brent McCoy  
 John McIntyre, MD  
 Miriam McMains  
 Merritt Melker, III, MD  
 F.A. Moore, MD  
 Julius Mullins, MD  
 Beverly Ogden, MD  
 Jane Peek, MD  
 Billy R. Penn, MD  
 Michael Perniciaro, MD

N. LaRon Phillips  
 Karl Pizzolatto, MD  
 Susan Puyau, MD  
 Nancy Richmond  
 Carol Ridenour, MD  
 Kirk Rousset, MD  
 James Ruiz, MD  
 Donna Saurage  
 Michael Schexnayder, MD  
 Clifford Schwartzburg, MD  
 Edward Schwartzburg, MD  
 Ellis Schwartzburg, MD  
 George Schwartzburg, MD  
 Sterling Sightler, MD  
 Curtis Solar, MD  
 Karen Solar, MD  
 Steven Sotile, MD  
 Steven Spedale, MD  
 Gerald Stack, MD  
 James Stenhouse, MD  
 Marvin Stuckey, MD  
 Richard Tannehill, MD  
 Yolunda Taylor, MD  
 Michael Teague, MD  
 Arthur Tribou, MD  
 David Walker  
 Kyle Waters  
 Bobby Webster, MD  
 Elizabeth Winters, MD  
 Margaret Womack

**Emeritus**

Jerry Affolter, Jr.  
 Charles Aycock, MD  
 Hoyt Ayres, MD  
 John Bateman  
 Edwin Bowman, MD  
 Laura Cassidy, MD  
 Stephen Chatelain, MD  
 Diana Dell, MD  
 Susan Futayyeh, MD  
 Evelyn Hayes, MD  
 Thomas Hightower  
 D. Wade Hollensworth, MD  
 Mrs. Ralph Howe  
 Mary Laville, MD  
 F. Drew Mayfield  
 Robert Moon, MD  
 Jo Anne Pine, MD  
 Ralph Sims  
 J. Noland Singletary  
 Thomas Sparks, MD  
 Fahimeh Tahvildari, MD  
 Rosemary Haas Williams

## Woman's Hospital Auxiliary

### **President**

Rosemary Pillow

### **President-Elect**

Judy Dupré

### **Vice President**

Georgia Brown

### **Recording Secretary**

Marty Davis

### **Corresponding Secretary**

Sylvia Steiner

### **Treasurer**

Yvonne Caballero

### **Assistant Treasurer**

Gail Ryan

### **Parliamentarian**

Wanda Aizpurua

### **Historians**

Peggy Vernice

Elizabeth Dimmick

### **Past President**

Karen Daniel

### **Standing Committees**

#### **Nominating**

Wanda Aizpurua

Carolyn Cate

Val Freeman

Jeri Harper

Pat Moreau

Karen Waggenspack

### **Christmas Stockings**

Lois Duquenne

Gail Ryan

Eileen Savold

### **Telephone**

Pam Myers

### **Christmas Family**

Karen Waggenspack

Gail Ryan

### **Grants**

Dot Dickinson

### **Publicity**

Elizabeth Dimmick

### **Scholarship**

Joann Walsh

### **Auxilian of the Year**

Lee Blanchard

### **Board Members at Large**

#### **Term Expiring 2008**

Nancy Paschal

Debra Sledge

Peggy Vernice

#### **Term Expiring 2009**

Eugenia Sorey

Helen Haymon

Pam Myers

#### **Term Expiring 2010**

Mary Ann Hebert

Nancy Hubiak

Alice Pate

### **Members**

Val Adamo

Wanda Aizpurua

Denise Amoroso

Bonnie Andrus

Cathryn Arceneaux

Cheryl Arceneaux

Janice Atkinson

Laurie Aucoin

Elaine Babcock

Gwen Babineaux

Elizabeth Baker

Liz Barbay

Mary Barker

Pam Barlow

Dot Beary

Talissa Becnel

Dallas Bellue

Sarah Davis Bilies

Lisa Binder

Connie Blackburn

Lee Blanchard

Jon Blumberg

Anne E. Blythe

Geraldine Bock

Tom Bolling

Millie Bonacorso

Mary Bordelon

Susan Bordelon

Eleanor Bortnick

Kathleen Bosch

Alene Bourgeois

Mae Bowman

Juanita Bozeman

Shirley Brecheen

Nona Brouillette

Veerle Brouns

JoAnn Broussard

Debbie Brown

Delia Brown

Georgia Brown

Chris Browning

Virginia Brumberger

Elaine Burke

Leslie Burns

Yvonne Caballero

Betty Calcagno

Stacy Carling

Janice Carpenter

Carolyn Cate

Doris Chesler

Doris Coffing

Janie Coles

Jodi Conachen

Sandi Cox

Betty Crawford

Joella Daigle

Karen Daniel

Pat Daniel

Reakey D'Antoni

Marty Davis

Cecilia Debetaz

Gale Delatte

Emeline Desselles

Nathalie diBenedetto

Dot Dickinson

Elizabeth Dimmick

Marcella Drumm

Mary Duhé

Jessie Dunbar

Judy Dupré

Lois Duquenne

Ruth Durlacher

Sherry Hebert Eubanks

Jean Fanning

Monica Fazio

Karen Feigley

Rose Marie Fife

Teri Fontenot

Helen Fossier

Carol Foster

Valerie Freeman

Marjorie Frey

Leora Fritton

Sal Gallo

Elizabeth Geheber

Ronald George

Nita Gildon

**Woman's Center for  
Newborn and Infant Care  
Parent Advisory Council**

Lee Girlinghouse	Beth Manning	Patti Sanders	Marty Ducote
Juarene Gisclard	Wanda Mayers	Eileen Savold	Doris Heckard
Mary Ann Gorsich	Lee Mazzoli	Rita Scallan	Amanda Juneau
Bill Grosskopf	Carmen McConnell	Marguerite Wingate-Scardina	Laurn Modenbach
Jo Grosskopf	Louise McGehee	Kathy Chamber	Kristin Sell
Francine Groves	Lois McGowan	Rhea Schneider	Leigh Townsend
Stacy Gruenwald	Hortense McMullan	Barbara Schwartzburg	Brooke Tarver
Toni Guerico	Rebecca Melancon	Kathy Schwartzburg	
Patti Hebert Haddad	Sybil Metrailer	Judy Scimeca	
Jamie Haeuser	Jennifer Montgomery	Trish Sedlin	
Ann Haile	Wanda Montgomery	Mary Senchak	
Jeri Harper	Anne Moore	Ruth Sessions	
Janet Harris	Pat Moreau	Jeanne Shepherd	
Pet Harvey	Lisa Morris	Lorraine Skidmore-Mayes	
Amelie Haydel	Martha Morrison	Debra Sledge	
Helen Haymon	Catherine Munson	Caroline Smack	
Kathy Heaslip*	Pam Myers	Eugenia Sorey	
Mary Ann Hebert	Kathy Nikolaus	Bobbie Spano	
Nancy Hillmann	Ethel Norwood	Gail St. Amant	
Nancy Hubiak	Diane O'Connor	JoPaul Steiner	
Meepsie Dougherty Jackson	Carolyn Ott	Sylvia Steiner	
Snookie Jackson	Pam Parker	Linda Stelly	
Mary Lou James	Nancy Paschal	Kathryn Stenhouse	
Otis James	Alice Pate	Midge Sutherland	
Charlotte Kater	Nancy Penn	Linda Talbot	
Bessie Kershaw	Rachel Peré	Marverne Terrell	
Robbie Kilpatrick	Charles Petrilak	Sharon Thomas	
Joanne Kleiman	Lois Petrilak	Betty Tulley	
Eleanor Kleinpeter	Rosemary Pillow	Mardie Varner	
Joan Knapp	Arralee Presley	Peggy Vernice	
Judy Koonce	Bunny Purvis	Barbara Vinet	
Janie Labauve	Cynthia Rabalais	Karen Waggenspack	
Janell LaBorde	Wayne Rabalais	Audrey Walker	
Connie LaCour	Beth Reames	Bobby Walker	
Meredith Landry	Janice Remmetter	Joann Walsh	
Sandra Landry	Peggy Rester	Sylvia Washauer	
Sharon Lane	Betty Richards	Myron Wheeler	
JoPaula Lantier	Kathy Rising	Chantelle Whitehead	
Anne Laville	Marianna Ritter	Mildred Whitlock	
Cristina Lawrence	Tami Rodney	Carlean Williams	
Jerri LeBlanc	Rhea Rosenberg	Betty Woods	
Jan LeBleu	Kathy Rumpfellow	Marian Yaun	
Tracie LeBleu	Gail Ryan	Helen York	
Johnnie Lendo	Ethel Sabbagh	Elaine Zollmann	
Sue Lutz	Roselyn Sagona		

*\*Deceased*

## Woman's Hospital Volunteers

Denise Amoroso  
Gwen Babineaux  
Mary Barker  
Dot Beary  
Connie Blackburn  
Lee Blanchard  
Tom Bolling  
Mary Bordelon  
Susan Bordelon  
Alene Bourgeois  
Juanita Bozeman  
Veerle Brouns  
Delia Brown  
Georgia Brown  
Chris Browning  
Virginia Brumberger  
Elaine Burke  
Yvonne Caballero  
Betty Calcagno  
Janice Carpenter  
Carolyn Cate  
Doris Coffing  
Sandi Cox  
Betty Crawford  
Karen Daniel  
Pat Daniel  
Marty Davis  
Cecilia Debetaz  
Dot Dickinson  
Elizabeth Dimmick

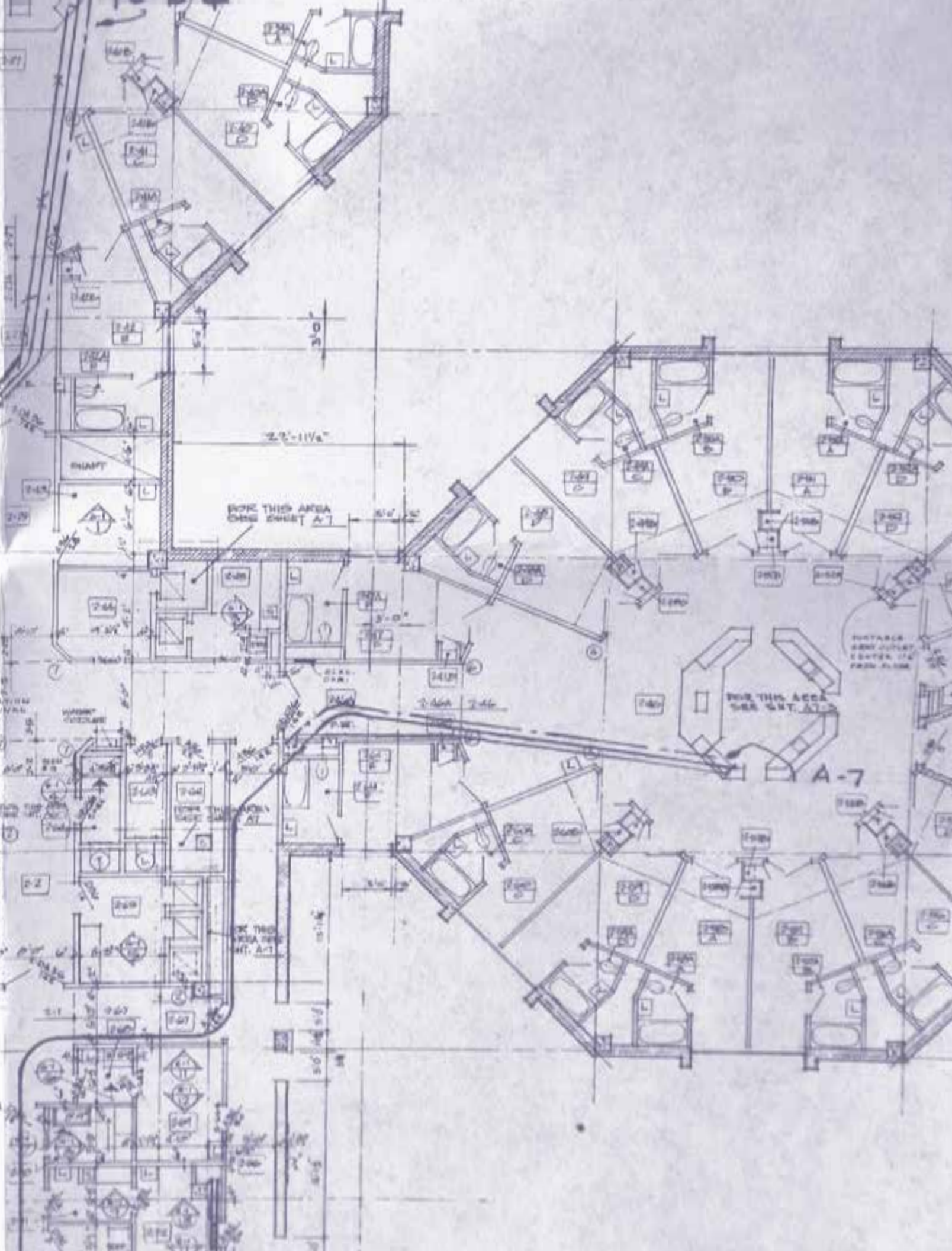
Mary Duhé  
Dottie Dumigan\*  
Jessie Dunbar  
Judy Dupré  
Lois Duquenne  
Ruth Durlacher  
Jean Fanning  
Rose Marie Fife  
Valerie Freeman  
Margie Frey  
Leora Fritton  
Sal Gallo  
Ronald George  
Nita Gildon  
Mary Ann Gorsich  
Ann Haile  
Jeri Harper  
Amelie Haydel  
Helen Haymon  
Mary Ann Hebert  
Nancy Hillmann  
Nancy Hubiak  
Snookie Jackson  
Joanne Kleiman  
Janie Labauve  
Connie LaCour  
Sandra Landry  
Sharon Lane  
JoPaula Lantier  
Anne Laville

Cristina Lawrence  
Jeri LeBlanc  
Jan LeBleu  
Tracie LeBleu  
Johnnie Lendo  
Wanda Mayers  
Carmen McConnell  
Rebecca Melancon  
Wanda Montgomery  
Anne Moore  
Pat Moreau  
Martha Morrison  
Catherine Munson  
Pam Myers  
Kathy Nikolaus  
Nancy Paschal  
Alice Pate  
Rachel Peré  
Charles Petrilak  
Lois Petrilak  
Rosemary Pillow  
Bunny Purvis  
Peggy Rester  
Betty Richards  
Kathy Rising  
Tami Rodney  
Caryn Roland  
Kathy Rumpfellow  
Gail Ryan  
Roselyn Sagona

Patti Sanders  
Eileen Savold  
Rita Scallan  
Kathy Schamber  
Judith Scimeca  
Ruth Sessions  
Debra Sledge  
Caroline Smack  
Eugenia Sorey  
Bobbie Spano  
Gail St. Amant  
JoPaul Steiner  
Sylvia Steiner  
Linda Stelly  
Midge Sutherland  
Linda Talbot  
Sharon Thomas  
Peggy Vernice  
Barbara Vinet  
Audrey Walker  
Bobby Walker  
Joann Walsh  
Myron Wheeler  
Chantelle Whitehead  
Carlean Williams  
Helen York  
Elaine Zollmann

*\*Deceased*







**9050 Airline Highway  
Baton Rouge, LA 70815  
225-927-1300  
womans.org**

**About Woman's Hospital**

Woman's Hospital is a 501(c)(3) not-for-profit organization governed by a board of community volunteers. Contributions, along with proceeds from the hospital's operations, are reinvested in research, community education, service programs, equipment, and facilities.